

# Digital One Room Schoolhouse (DORS) THEORY OF CHANGE

## INPUTS

- Curated library of activities
- Aligned to standards
- Tagged for easy reference
- Trained adult mentors
- Students' satisfaction rating



## LEARNING ACTIVITIES

Students participate in learning stage appropriate lessons that:

- Reinforce the scientific method
- Encourage collaboration
- Explain math and science skills
- Give students the room to fail



## OUTPUTS

Increased learning time addressing fundamental math and science skill inefficiencies

Students gain confidence in attacking complicated subject matter

Volunteer's time and expertise maximized by scaling and crowdsourcing participation



## MEDIUM TERM CHANGE

### ACTION

Students acquire learning leads that improve & enhance

- Behavior
- Habits
- Applying new knowledge
- Emotional capabilities
- Community based action
- Decision making
- Critical thinking

### The power to:

Nurture young peoples' natural curiosity and their natural quest for knowledge.

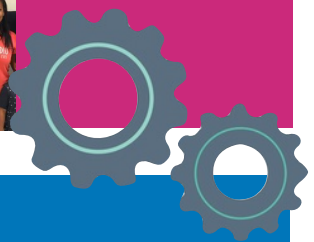


## SHORT TERM CHANGE

### LEARNING

- Attitudes
- Skills
- Aspirations
- Motivations
- Academic language

- Individual development in key employable capabilities
- Personal capacity development-Self awareness is with respect to career preferences
- Confidence in controlling academic outcomes
- Improve learning and understanding of expectations



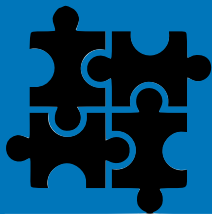
## LONG TERM CHANGE

### CONDITIONS

Actions and experiences develop math and science core competencies. These competencies help students hone skills, behaviors and relationships that lead to life changing improvements and well-being.

### Affect on Individual Conditions:

- Social
- Self confidence
- Economic
- Career
- Education
- Employment
- Life long learners



### Students Gain the Power to:

- Build an affective network of mentors and relations
- Set and achieve academic goals based on career aspirations
- Access to quality STEM learning experiences
- Improve capacity to make critical decisions

### Educators & Mentors

- Given the academic tools to teach and support students passions
- Deeper relationships with mentees



### The Community Receives

- A diverse and highly trained workforce
- Develop alliances regional industry, state and local governmental entities, and nonprofit community-based organizations

